



Journal E-Edition

<i>BSP Business Web Pages</i>	2
<i>Box Relay Social</i>	2
<i>WOY Pin & Hurricane Survival in Zip Locks</i>	3
<i>Tea Cup Installation</i>	4-7
<i>New England/ Canada Cruise & 75th Cake</i>	8
<i>Conventions/Panama Pete</i>	9
<i>Beta Shoppe Items</i>	10

Special points of interest:

- Enjoy the Thematic Journey of BSP using the past to present themes.
- Enjoy a slots tournament in Vegas
- Story Behind the Woy Pin
- 75th Anniversary Cake

A Beta Sigma Phi Thematic Journey

The road ahead can lead to a festival of friendship. We can build our life of beauty, and also have time to remember what lies ahead. While getting to know you, takes a call of action. We hope for a year of fulfillment and a gathering to embrace each other heart to heart. Then, we can live with wings only to victoriously live with wings. The torch will light the way, so that you will know this is the way. Our invitation to life will crown every moment as we seek the jewel of phi and turn the key in order to reach for the stars. Meanwhile, join hands and hearts and light many lamps as life begins at 40. Let's lead a queenly quest and love, love, love. A stairway to happiness will let your heritage ring. So, why not follow another rainbow road and light another torch. Yes! We all need to seek new horizons around the world of Beta Sigma Phi. All of us can share those golden treasures as each of us circle the world with yellow roses. The golden key to friendship will help keep the dream big while we paint a living masterpiece. And, you and I can walk in the sun, find renaissance and share the dream. Each of us need to build bridges of friendship. We can pave it with stars and bless the building with gifts from the heart. All of us can then celebrate the magic as it is a time for us. Together we grow and treasure special moments as each of us light the way. Beta Sigma Phi: The Dream Catcher offers reflections of love to sisters of the heart. From dust into stardust, we have a new century, new beginning. A Diamond Celebration - Our Future Shines are the words spoken as we begin to weave a web of friendship. Only the gates of friendship allow us all to see the colors of friendship. As we give the gifts of sisterhood to one another, only the good, the true and the beautiful will keep us 75 years young. *by Karen M. Ing*

Las Vegas Convention Registration

The convention is at the Riviera Hotel, September 29, 30 and October 1, 2006. Cost is \$150 for basic registration, S, LG and XL T-shirts are \$15, XXL and XXXL T-shirts are \$18. Riviera Hotel is charging \$115 per night per

room, double occupancy, Friday and Saturday. Rates for earlier and later are \$89 based on availability.

Friday night, snacks only, real food on Saturday breakfast and Saturday lunch, NO SATURDAY NIGHT EVENT.

Slot tournament available Saturday afternoon, \$10 to enter.

ABSOLUTE DEADLINE for registrations, August 31, 2006.

Go to: <http://www.betajournal.com/conv1.htm>

BSP in Business Links & Sister Web Pages



Bsp sisters.ca

Hi, all. The **Online Sigma** website, as well as the **BSPs in Business** website, have moved to a new domain that is now available for BSPs everywhere.

OLS is available direct at <http://www.bspsisters.ca/ols/> and the BSP's in Business website is at <http://www.bspsisters.ca/>

business/ - it's been recently updated. Check it out and see what your sisters are up to!

Both are available also through the www.bspsisters.ca website which I've established. There is space available for other chapters, both online and land, as well as councils

who wish to have an advertising-free home online, with full FTP access to control your website yourself. :) Please contact me if you have any questions.

Hugs,
Sheila

Gift Wrapped - Box Relay Social

Sisters,

In past 14 years, I lived in a lovely small area of Englewood in Overbrook Gardens. I was on the board and I did some special activities for our yearly picnic. One that was extremely fun is as follows.

It's a relay. Everyone gets involved.

Materials needed:

You get at least 15 different sized boxes and wrap the smallest, putting in a (we had a gift certificate from a restaurant) surprise for the last person opening the last box. That box is then put into the next sized box for wrapping. Each box grows a bit bigger until the last box is wrapped all boxes are inside a huge box, each one individually wrapped.

You need a man's hat, large overcoat, and large gloves, and pair of dice and pie tin.

Game begins:

One person holds the pie tin with the dice in it. With a roll of 7 or 11, that person goes into the center and puts on the gloves, hat and overcoat and starts to unwrap the box. The person with the dice and pie tin continues to go around the group and let everyone, who wishes, to roll the dice. When the person rolls the 7 or 11, that person goes in and gets the clothes from the person and then puts the same on and then starts to unwrap the box. This is so funny to watch and, of course, it is explained that there is a prize in the box. No one

knows that there are "boxes". It does take some time to get all the packages wrapped...and you could use various papers to wrap each box. Sometimes the switching of clothes is all that the person gets done if the rolls come faster than usual. The person continues to mill around the group to allow people to roll over and over but in turn going thru the group. This is SO MUCH FUN for ALL! Get your cameras ready!!!

75 Sparkling diamond smiles,

Marilyn—OLA

"75 Sparkling
diamond smiles."

Marilyn



Girls Just Want to Have Fun!

The Story Behind the (Girl) Woman of the Year Pin

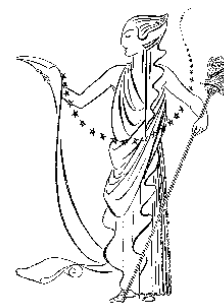
Back in the 1970's, (I think, maybe the early 80's) I thought it should be a nice thing to have an alternative Woman of the Year Pin in addition to the round Diotima and with the names of the degree hanging from it. Also, I thought it would be nice to have an alternative to the Valentine Queen Rhinestone pin. I drew up the larger Diotima with a

bar on the side to put the stone color of the degree, it was accepted by International and I drew up a gold and brown crown with pearls for the Valentine Queen pin. It too, was accepted by International. Bill Ross presented me with the first of the run of each pin. I treasure them and wear them still today

It tickles my heart when I

see my sisters wearing one or both of the pins I created. I know not many know that those pins were designed by me, but that is okay. My joy is seeing those sisters who wear it with pride.

Hugs, Kitt in Arizona



It just shows our pride in Beta Sigma Phi.

Hurricane Survival Kits in Zip Lock Bags

Food/Water *

Bottled water (1 gallon per day per person) for 14 days*
Manual can opener*

Non-perishable foods:

Canned meat, fish, fruit and vegetables

Bread in moisture proof packaging

Cookies, candy, dried fruit

Canned soups, & milk

Powdered or single serve drinks

Cereal bars

Package condiments

Peanut butter and jelly

Instant coffee & tea

Booze, plenty of it

Flashlight (1 per person)

Portable battery powered lanterns

Glass enclosed candles

Battery powered radio or TV (get a hank cranked one that recharges the rechargeable batteries)

Battery operated alarm clock

Extra batteries, including hearing aids

Ice chest and ice

First Aid Kit-including aspi-

rin, antibiotic cream, and antacids

Mosquito repellent

Sun screen (45 SPF recommended)

Waterproof matches/butane lighter

Money

Disposable plates, glasses, and utensils

Maps of the area with landmarks on it

Cooking :

Sterno

Portable camp stove or grill

Stove fuel or charcoal, lighter fluid

Disposable eating utensils, plates & cups

Napkins & paper towels

Aluminum foil

Oven mitts

Plain bleach or water purification tablets

Personal Supplies:

Prescriptions (1month supply)*

Photo copies of prescriptions

Toilet paper

Entertainment: books, magazines, card games etc

Soap and detergent

Toiletries

Bedding: pillows, sleeping bag

Clothing for a few days

Rain ponchos, and work gloves

Extra glasses or contact lenses

Documents:

Photo copies of prescriptions

Photo identification

Proof of occupancy of residence (utility bills)

Medical history or information

Waterproof container for document storage

Back-up disks of your home computer files

Camera & film

Pet Supplies

Dry & canned food for two weeks

Water (1/2 gallon per day)

Litter box supplies

Traveling Cage

Other Necessities:

Tools: hammer, wrenches, screw drivers, nails, saw

Trash bags (lots of them)

Cleaning supplies

Plastic drop cloth

Mosquito netting

ABC rated fire extinguisher

Masking or duct tape

Outdoor extension cords

Spray paint to identify your home if necessary

One of your home phones (many people lost theirs during disasters, even though their phone service still worked)

“If you have any plans to share with us or offers for lodging for stranded members, please let us know.” - Laura Ross Wingfield

Installation of Officers—Tea Cup Installation (3.25 pages)

Cup Installation

The Officiant reads: We are assembled now to install the officers of _____ Chapter of Beta Sigma Phi.

As we stand together in our circle of love and friendship let us think ahead to a new year. A circle of love and friendship, never ending, is represented by a cup. This cup when given from one sister to another is a symbol of love and understanding, the basis for all friendships.

When you look at the top of your cup you will see that it is round and smooth with no end to the circle. Our love and understanding for each other should be like that never ending circle. As you see the base of your cup which lends its strength and support to the never ending circle, think of it as a strength and support of your sisters as you assume your office.

Treasurer

_____, as Treasurer of this chapter, you become the trusted custodian of chapter finances. It is your duty to collect and disburse all monies of the chapter. You are required to keep an accurate account book of such receipts and disbursements, to give a report of these at regular meeting, and to submit your account to the Executive Board for auditing at the expiration of your term of office. It is your responsibility to maintain the financial integrity of the chapter in every way possible, and to give prompt attention to the payment of financial obligations due to or by the chapter at all times.

Will you pledge yourself to the conscientious fulfillment of these duties?

Answer, "I pledge myself, to the utmost of my ability, to accept and fulfill the duties of the office of Treasurer."

Retiring Treasurer presents account book.

Retiring Treasurer: In behalf of _____ Chapter, and as a property of your office I present to you the account book of our chapter. This book has been audited and balanced under the approval of the Executive Board and is entrusted to your care with full confidence in your integrity.

Installing Officer: In behalf of _____ Chapter, I present to you this cup of blue which symbolizes Humility. Let this symbol of Humility guide you with accuracy in all obligations. Let this cup of blue symbolize the account book of your Chapter.

Corresponding Secretary

_____, as Corresponding Secretary of our Chapter you have been given an added opportunity for service in the great sisterhood of which you are now a vital part. We depend upon you to give prompt and courteous response to chapter correspondence, retaining carbon copies of all such correspondence in a file accessible to the chapter at all times and to give a report of this at each regular meeting.

In your acceptance of this office will you pledge yourself to the

Installation of Officers—Tea Cup Installation Cont...

acceptance of these obligations?

Answer, “I pledge myself, to the utmost of my ability, to accept and fulfill the duties of the office of Corresponding Secretary.”

Retiring Corresponding Secretary presents chapter stationery and other properties for her office.

Retiring Corresponding Secretary: In behalf of _____ Chapter, I now present to you the properties of the office of Corresponding Secretary.

Installing Officer: In behalf of _____ Chapter, I present to you this cup of orange, a symbol of loyalty. May this symbol of loyalty encourage you to be true and steadfast in all obligations. Let this cup of orange symbolize the properties of the office of Corresponding Secretary.

Recording Secretary

_____, as Recording Secretary you are the custodian of this chapter’s history and the transcriber of its activities. It becomes your opportunity and your responsibility to transcribe faithfully the minutes of our meetings, and to keep these minutes at all times available to the President and the chapter. In addition to these duties you are especially obligated to prepare and forward to the International Office the monthly reports and minutes required to ensure our chapter’s good standing in the International Organization.

Will you pledge yourself to the careful fulfillment of these duties?

Answer, “I pledge myself, to the utmost of my ability, to accept and fulfill the duties of the office of Recording Secretary.”

Retiring Recording Secretary presents minute book.

Retiring Recording Secretary: In behalf of _____ Chapter, I present to you our minute book, in which you shall record a full and accurate report of all our meetings, our attendance and our activities.

Installing Officer: In behalf of _____ Chapter, I present to you this cup of yellow, a symbol of vision. May this symbol of vision open our hearts and minds in gratitude and growth to all avenues of love and friendship.

Vice-President

_____, as Vice-President of this chapter you are highly honored by our sisterhood. You are entrusted with a number of important and traditional duties. The most important of these is assuring the future of our chapter through careful and enthusiastic rushing. Second to that is the training of new members for full participation and enjoyment in Beta Sigma Phi. In the absence or disability of the President you are responsible for assuming her duties. As Chapter Hostess, you will extend the traditional courtesies to our member and our guests.

Installation of Officers—Tea Cup Installation Cont...

In the absence of the Treasurer, you are authorized to assume her duties.

You are expected to give full cooperation and loyalty to our President and to foster and promote chapter unity at all times.

In your acceptance of this office will you pledge yourself to assume these responsibilities and to accept these obligations?

Answer, "I pledge myself, to the utmost of my ability, to accept and fulfill the duties of the office of Vice-President."

Retiring Vice-President presents Book of Beta Sigma Phi.

Retiring Vice-President: In behalf of _____ Chapter, I present to you this Book of Beta Sigma Phi, symbol of your duties and as a reminder of the traditions and courtesies of our sisterhood.

Installing Officer: In behalf of _____ Chapter, I present to you this cup of green, exemplifying fellowship, that dear love of sisters which displays itself, not only to those who wear our Badge, but also for all fellow beings. Let this cup symbolize your responsibilities of lighting the way for our sisters.

President

_____, to you has come an honor and a real opportunity. We have chosen you to be our constituted leader through the coming year, with full faith in your integrity of character, your loyalty to our ideals and your fidelity to the trust imposed upon you.

May it be your resolution, therefore to represent the membership faithfully and truly, and to foster harmony and unity in all our undertakings.

To you, all officers and committees look for guidance and assistance. To you they are responsible for the fulfillment of their duties.

To you, in the fulfillment of this obligation, each member pledges full allegiance.

You accept a privilege and assume a responsibility to have a part in the cultural and social life of your community, your state, and your nation.

In your acceptance of the office of President, will you pledge yourself to these obligations?

Answer, "I pledge myself, to the utmost of my ability, to accept and fulfill the duties of the office of President."

Retiring President presents gavel.

Retiring President: In behalf of _____ Chapter, I now present to you this gavel, symbol of authority, and token of the trust we hold in you.

Installing Officer: In behalf of _____ Chapter, I present to you this cup of white, symbolizing the white flame of love and sum of all colors. May this symbol of love and faith burn brightly within your heart, being

Installation of Officers—Tea Cup Installation Cont...

ever aware that this flame of love will help to define the way for those members who look to you for direction.

Each of you has been given a cup of color, and now as you stand together, each officer with her own individual hue, you have formed a rainbow. May this spectrum of beauty shine forth as your guide, imparting a radiating glow of love and friendship upon each of you and your activities, as you now begin your tenure. May your hearts be strengthened for the duties before you and may your honor reflect upon us all. I do now declare the officers of _____ Chapter of Beta Sigma Phi duly installed for the year 20__ and I extend my best wishes and congratulations to all of you.

Please join hands for the Mizpah.



Beta Sigma Phi

Cat N (Inside Cabin)	\$870.00
Cat H (Outside Cabin)	\$1080.00
Cat E2 (Balcony Cabin)	\$1260.00

Deposit of \$450.00 per person due Nov. 1, 2006 w/ forms from packet (PDF) on line to Denise Wolf.

NEW ENGLAND/CANADA
CRUISE SEPT 28—OCT 7, 2007

Ports of Call

Cape Liberty, NJ; Newport, RI; Halifax, Nova Scotia; St. John, New Brunswick; Bar Harbor, ME; Boston, MA; Cape Liberty, NJ



Contact: Denise Wolf, AAA Travel Agent for the cruise
Wolf.Denise@aaa-texas.com or phone 214-599-7786 / fax
972-208-4861

Go to

http://www.betajournal.com/newengland_canadapacket.pdf

For the packet and forms to fill out to turn into Denise.

\$450.00 Deposit Due by November 1st

Final Payment Due by July 20, 2007

Early Dining Has Been Requested! Passports are required on all cruise lines.

Sponsored by Karen Ing & The Beta Journal

*If you would like to be on the Cruise Mail List (no obligation to come), go to <http://www.betajournal.com/cruise2007.htm#A1.02>



Founder's Day Cake

Connie Balli, Texas Preceptor Mu Tau, Austin

Beta Sigma Phi

*Custom Made BSP Badges by KS Sigma
Lambda - click PDF Doc or click WORD
Doc*

*Please help/support this ritual chapter,
so they can attend the Kansas Convention*

CONVENTIONS 2006 / 2007

Submit Your Convention Information Online

<http://www.betajournal.com/conv1.htm>

2007 Convention Postings On Line:
Arkansas—California—Florida—Northwest Regional
(Washington)

Fall 2006 Conventions

*Jackson, Mississippi Sept. 22—24, 2006 (Changed from Biloxi
due to Hurricane Katrina)*

“United We Stand”

Perth Australia Sept. 15th—17, 2006

Fort Wayne, Indiana Sept 29—Oct 1, 2006

Arizona/Nevada Sept. 29—Oct. 1, 2006

Erie, Pennsylvania Sept. 29—Oct 1, 2006

“Great Friends, Great Times, Great Lakes”

Springfield, Missouri October 6—8, 2006

“Get Your Kicks on Route 66”

Appleton, Wisconsin October 13—15, 2006

Overland Park, Kansas October 13—15, 2006

“Beta Sigma Phi High”

*Newport News, Virginia October 27—29, 2006 “School
Daze”*



Panama Pete Goes to Lake Cowichan

Named Official Friendship Ambassador

Sign Up to Reserve Pete

http://www.betajournal.com/mascot_2006.htm

Beta Sigma Phi

**Custom Made BSP Badges by KS
Sigma Lambda - click PDF Doc or click
WORD Doc**

**Please help/support this ritual chapter,
so they can attend the Kansas
Convention October 13-15, 2006**

WHAT'S NEW IN THE BETA SHOPPE?

BETA SHOPPE—Free to Submit Items and Pictures

http://www.betajournal.com/main_shoppe.htm
http://www.betajournal.com/main_shoppe2.htm

Entertainment Coupon Books proceeds to go to Cancer Research

75 Years Young Shirts \$16 to \$18 each

BSP Wine Glass \$8 each

75 Rhinestone Pins \$8.50 each

Baby Onesie's "My Mom/Grandma's a Beta Sigma Phi" \$7.50

5 Piece Manicure Set \$5.50 each (S/H Included)

Cookbooks—Southern Comfort \$11.50 each

Swarovski Bracelets \$25.00 each (include S/H) & Gift Wrap

Many Items to Choose From Virginia Preceptor Gamma Kappa

BSP Aprons \$9.99 each

BSP Car Flags \$10.00 each

Beta Bag & Berry Bags \$8 (S/H Included) each

Fleece Vests \$45 each (S/H Included) each & More Online...

In The Beta Shoppe



Available Until
December

Bookmarkers

Virginia Xi Chapter \$1.50 each



BSP Photo Gals

Illinois Preceptor Epsilon \$7.00



Embroidered Luggage Tags

Virginia Xi Epsilon \$10.00 each



Canvas Purses

Virginia Xi Epsilon \$12.00 each